

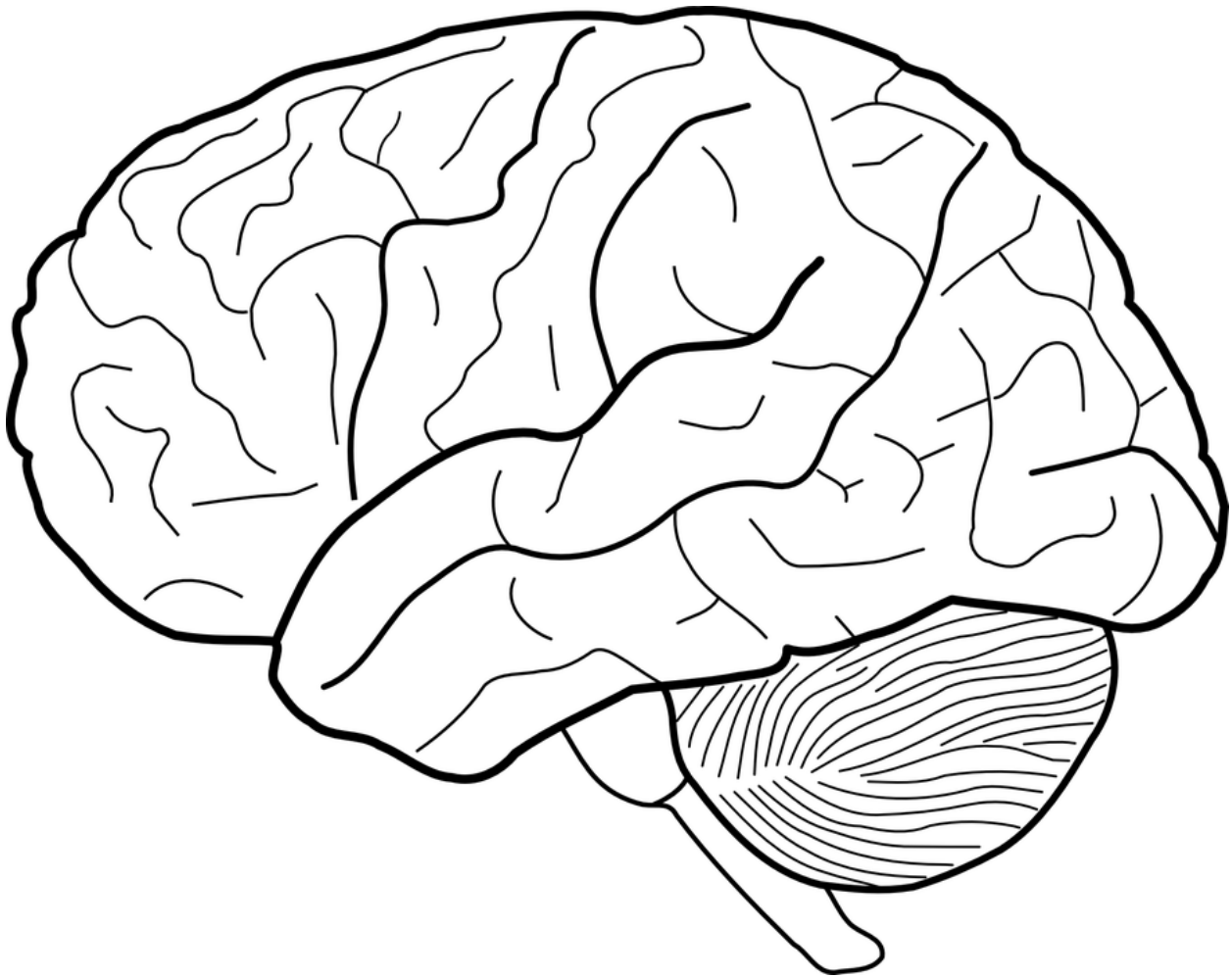
- Identify brain regions we will commonly come across:

Level 1: Use the “3D Brain” app, or prior knowledge, to label the following—

Lobes (frontal, parietal, temporal, occipital)

Areas outside of neocortex (cerebellum, brain stem)

Major functional areas (motor, somatosensory, visual, auditory)



Level 2: Figure out where specific regions are located and how people refer to directionality in the brain

Regions (basal ganglia, hippocampus, temporal cortex, angular gyrus, cingulate gyrus, fusiform gyrus, precuneus, parahippocampal gyrus)

Major features (central sulcus, lateral/Sylvian fissure, calcarine fissure)

Directions (inferior/superior, rostral/caudal, anterior/posterior, medial/lateral, dorsal/ventral)

Apply directions to each of the lobes identified in Level 2: e.g., where is inferior frontal gyrus?

